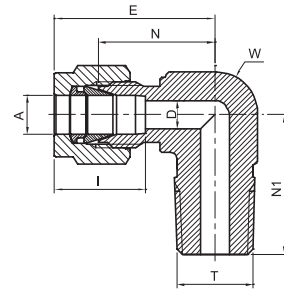


# MALE 90° ELBOW

TME



TUBE (METRIC) MALE NPT THREAD

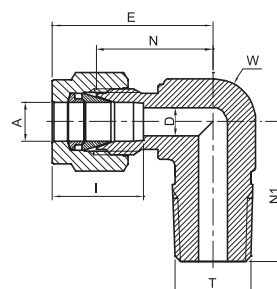
| Part Number     | A         | T   | D    | W           |      | N    | E    | N1   | I    |
|-----------------|-----------|-----|------|-------------|------|------|------|------|------|
|                 | Tube O.D. | NPT |      | Wrench flat |      |      |      |      |      |
|                 | mm        | in  | mm   | in          | mm   | mm   | mm   | mm   | mm   |
| TME - 3M - 2N   | 3         | 1/8 | 2.4  | 7/16        | 11.1 | 17.0 | 23.6 | 17.8 | 12.9 |
| TME - 3M - 4N   | 3         | 1/4 | 2.4  | 1/2         | 12.7 | 18.0 | 24.6 | 23.4 | 12.9 |
| TME - 4M - 2N   | 4         | 1/8 | 2.4  | 1/2         | 12.7 | 18.8 | 25.4 | 18.8 | 13.7 |
| TME - 4M - 4N   | 4         | 1/4 | 2.4  | 1/2         | 12.7 | 18.8 | 25.4 | 23.4 | 13.7 |
| TME - 6M - 2N   | 6         | 1/8 | 4.8  | 1/2         | 12.7 | 19.6 | 27.0 | 18.8 | 15.3 |
| TME - 6M - 4N   | 6         | 1/4 | 4.8  | 1/2         | 12.7 | 19.6 | 27.0 | 23.4 | 15.3 |
| TME - 6M - 6N   | 6         | 3/8 | 4.8  | 11/16       | 17.5 | 22.4 | 29.8 | 26.2 | 15.3 |
| TME - 6M - 8N   | 6         | 1/2 | 4.8  | 13/16       | 20.6 | 24.4 | 31.8 | 33.0 | 15.3 |
| TME - 8M - 2N   | 8         | 1/8 | 4.8  | 9/16        | 14.3 | 21.3 | 28.8 | 19.8 | 16.2 |
| TME - 8M - 4N   | 8         | 1/4 | 6.4  | 9/16        | 14.3 | 21.3 | 28.8 | 24.4 | 16.2 |
| TME - 8M - 6N   | 8         | 3/8 | 6.4  | 11/16       | 17.5 | 23.1 | 30.6 | 26.2 | 16.2 |
| TME - 8M - 8N   | 8         | 1/2 | 6.4  | 13/16       | 20.6 | 25.1 | 32.6 | 33.0 | 16.2 |
| TME - 10M - 2N  | 10        | 1/8 | 4.8  | 11/16       | 17.5 | 23.9 | 31.5 | 21.6 | 17.2 |
| TME - 10M - 4N  | 10        | 1/4 | 7.1  | 11/16       | 17.5 | 23.9 | 31.5 | 26.2 | 17.2 |
| TME - 10M - 6N  | 10        | 3/8 | 7.9  | 11/16       | 17.5 | 23.9 | 31.5 | 26.2 | 17.2 |
| TME - 10M - 8N  | 10        | 1/2 | 7.9  | 13/16       | 20.6 | 25.9 | 33.5 | 33.0 | 17.2 |
| TME - 12M - 2N  | 12        | 1/8 | 4.8  | 13/16       | 20.6 | 25.9 | 36.0 | 23.6 | 22.8 |
| TME - 12M - 4N  | 12        | 1/4 | 7.1  | 13/16       | 20.6 | 25.9 | 36.0 | 28.2 | 22.8 |
| TME - 12M - 6N  | 12        | 3/8 | 9.5  | 13/16       | 20.6 | 25.9 | 36.0 | 28.2 | 22.8 |
| TME - 12M - 8N  | 12        | 1/2 | 9.5  | 13/16       | 20.6 | 25.9 | 36.0 | 33.0 | 22.8 |
| TME - 12M - 12N | 12        | 3/4 | 9.5  | 1-1/16      | 27.0 | 29.7 | 39.8 | 36.8 | 22.8 |
| TME - 15M - 8N  | 15        | 1/2 | 11.9 | 15/16       | 23.8 | 27.9 | 38.0 | 35.1 | 24.4 |
| TME - 16M - 6N  | 16        | 3/8 | 9.5  | 15/16       | 23.8 | 27.9 | 38.0 | 30.2 | 24.4 |
| TME - 16M - 8N  | 16        | 1/2 | 11.9 | 15/16       | 23.8 | 27.9 | 38.0 | 35.1 | 24.4 |
| TME - 16M - 12N | 16        | 3/4 | 12.7 | 1-1/16      | 27.0 | 29.7 | 39.8 | 36.8 | 24.4 |
| TME - 18M - 8N  | 18        | 1/2 | 11.9 | 1-1/16      | 27.0 | 29.7 | 39.8 | 36.8 | 24.4 |
| TME - 18M - 12N | 18        | 3/4 | 15.1 | 1-1/16      | 27.0 | 29.7 | 39.8 | 36.8 | 24.4 |
| TME - 20M - 8N  | 20        | 1/2 | 11.9 | 1-3/8       | 34.9 | 34.5 | 44.6 | 41.7 | 26.0 |
| TME - 20M - 12N | 20        | 3/4 | 15.9 | 1-3/8       | 34.9 | 34.5 | 44.6 | 41.7 | 26.0 |
| TME - 22M - 12N | 22        | 3/4 | 15.9 | 1-3/8       | 34.9 | 34.5 | 44.6 | 41.7 | 26.0 |
| TME - 22M - 16N | 22        | 1   | 18.3 | 1-3/8       | 34.9 | 34.5 | 44.6 | 46.5 | 26.0 |
| TME - 25M - 12N | 25        | 3/4 | 15.9 | 1-3/8       | 34.9 | 36.8 | 49.1 | 41.7 | 31.3 |
| TME - 25M - 16N | 25        | 1   | 21.8 | 1-3/8       | 34.9 | 36.8 | 49.1 | 46.5 | 31.3 |

For inches, see next page

"D" - Dimension is minimum opening - dimensions are for reference only, and are subject to change without notice.

# MALE 90° ELBOW

TME

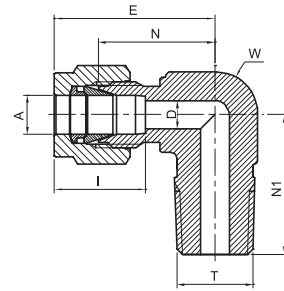
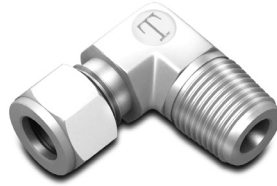


| TUBE (INCH) MALE NPT THREAD |                |       |          |      |       |                  |      |      |       |      |        |      |       |      |      |
|-----------------------------|----------------|-------|----------|------|-------|------------------|------|------|-------|------|--------|------|-------|------|------|
| Part Number                 | A<br>Tube O.D. |       | T<br>NPT | D    |       | W<br>Wrench flat |      | N    |       | E    |        | N1   |       | I    |      |
|                             | in             | mm    |          | in   | mm    | in               | mm   | in   | mm    | in   | mm     | in   | mm    | in   | mm   |
| TME - 1 - 1N                | 1/16           | 1.58  | 1/16     | 0.05 | 1.27  | 7/16             | 11.1 | 0.60 | 15.24 | 0.75 | 19.05  | 0.70 | 17.78 | 0.34 | 8.6  |
| TME - 1 - 2N                | 1/16           | 1.58  | 1/8      | 0.05 | 1.27  | 7/16             | 11.1 | 0.60 | 15.24 | 0.75 | 19.05  | 0.70 | 17.78 | 0.34 | 8.6  |
| TME - 2 - 2N                | 1/8            | 3.17  | 1/8      | 0.09 | 2.28  | 7/16             | 11.1 | 0.67 | 17.02 | 0.93 | 23.62  | 0.70 | 17.28 | 0.50 | 12.7 |
| TME - 2 - 4N                | 1/8            | 3.17  | 1/4      | 0.09 | 2.28  | 1/2              | 12.7 | 0.71 | 18.03 | 0.97 | 24.64  | 0.92 | 23.37 | 0.50 | 12.7 |
| TME - 3 - 2N                | 3/16           | 4.76  | 1/8      | 0.12 | 3.04  | 1/2              | 12.7 | 0.74 | 18.80 | 1.00 | 25.40  | 0.74 | 18.80 | 0.54 | 13.7 |
| TME - 3 - 4N                | 3/16           | 4.76  | 1/4      | 0.12 | 3.04  | 1/2              | 12.7 | 0.74 | 18.80 | 1.00 | 25.40  | 0.92 | 23.37 | 0.54 | 13.7 |
| TME - 4 - 1N                | 1/4            | 6.35  | 1/16     | 0.12 | 3.04  | 1/2              | 12.7 | 0.77 | 19.55 | 1.06 | 26.9   | 0.74 | 18.79 | 0.60 | 15.3 |
| TME - 4 - 2N                | 1/4            | 6.35  | 1/8      | 0.19 | 4.82  | 1/2              | 12.7 | 0.77 | 19.56 | 1.06 | 26.92  | 0.74 | 18.80 | 0.60 | 15.3 |
| TME - 4 - 4N                | 1/4            | 6.35  | 1/4      | 0.19 | 4.82  | 1/2              | 12.7 | 0.77 | 19.56 | 1.06 | 26.92  | 0.92 | 23.37 | 0.60 | 15.3 |
| TME - 4 - 6N                | 1/4            | 6.35  | 3/8      | 0.19 | 4.82  | 11/16            | 17.5 | 0.88 | 22.35 | 1.17 | 29.71  | 1.03 | 26.16 | 0.60 | 15.3 |
| TME - 4 - 8N                | 1/4            | 6.35  | 1/2      | 0.19 | 4.82  | 13/16            | 20.6 | 0.96 | 24.38 | 1.25 | 31.75  | 1.30 | 33.02 | 0.60 | 15.3 |
| TME - 5 - 2N                | 5/16           | 7.93  | 1/8      | 0.19 | 4.82  | 9/16             | 14.3 | 0.84 | 21.34 | 1.13 | 28.70  | 0.78 | 19.81 | 0.64 | 16.2 |
| TME - 5 - 4N                | 5/16           | 7.93  | 1/4      | 0.25 | 6.35  | 9/16             | 14.3 | 0.84 | 21.34 | 1.13 | 28.70  | 0.96 | 24.38 | 0.64 | 16.2 |
| TME - 5 - 6N                | 5/16           | 7.93  | 3/8      | 0.25 | 6.35  | 11/16            | 17.5 | 0.91 | 23.11 | 1.20 | 30.48  | 1.03 | 26.16 | 0.64 | 16.2 |
| TME - 6 - 2N                | 3/8            | 9.52  | 1/8      | 0.19 | 4.82  | 5/8              | 15.9 | 0.91 | 23.11 | 1.20 | 30.48  | 0.82 | 20.83 | 0.66 | 16.9 |
| TME - 6 - 4N                | 3/8            | 9.52  | 1/4      | 0.28 | 7.11  | 5/8              | 15.9 | 0.91 | 23.11 | 1.20 | 30.48  | 1.00 | 25.40 | 0.66 | 16.9 |
| TME - 6 - 6N                | 3/8            | 9.52  | 3/8      | 0.28 | 7.11  | 11/16            | 17.5 | 0.94 | 23.87 | 1.23 | 31.24  | 1.03 | 26.16 | 0.66 | 16.9 |
| TME - 6 - 8N                | 3/8            | 9.52  | 1/2      | 0.28 | 7.11  | 13/16            | 20.6 | 1.02 | 25.90 | 1.31 | 33.28  | 1.30 | 33.02 | 0.66 | 16.9 |
| TME - 6 - 12N               | 3/8            | 9.52  | 3/4      | 0.28 | 7.11  | 1-1/16           | 27.0 | 1.17 | 29.71 | 1.46 | 37.08  | 1.45 | 36.83 | 0.66 | 16.9 |
| TME - 8 - 4N                | 1/2            | 12.70 | 1/4      | 0.28 | 7.11  | 13/16            | 20.6 | 1.02 | 25.90 | 1.42 | 36.07  | 1.11 | 28.19 | 0.90 | 22.9 |
| TME - 8 - 6N                | 1/2            | 12.70 | 3/8      | 0.38 | 9.65  | 13/16            | 20.6 | 1.02 | 25.90 | 1.42 | 36.07  | 1.11 | 28.19 | 0.90 | 22.9 |
| TME - 8 - 8N                | 1/2            | 12.70 | 1/2      | 0.41 | 10.41 | 13/16            | 20.6 | 1.02 | 25.90 | 1.42 | 36.07  | 1.30 | 33.02 | 0.90 | 22.9 |
| TME - 8 - 12N               | 1/2            | 12.70 | 3/4      | 0.41 | 10.41 | 1-11/16          | 27.0 | 1.17 | 29.71 | 1.57 | 39.88  | 1.45 | 36.83 | 0.90 | 22.9 |
| TME - 10 - 6N               | 5/8            | 15.87 | 3/8      | 0.38 | 9.61  | 15/16            | 23.8 | 1.10 | 27.94 | 1.50 | 38.10  | 1.19 | 30.23 | 0.96 | 24.4 |
| TME - 10 - 8N               | 5/8            | 15.87 | 1/2      | 0.47 | 11.94 | 15/16            | 23.8 | 1.10 | 27.94 | 1.50 | 38.10  | 1.38 | 35.05 | 0.96 | 24.4 |
| TME - 10 - 12N              | 5/8            | 15.87 | 3/4      | 0.50 | 12.70 | 1-1/16           | 27.0 | 1.17 | 29.71 | 1.57 | 39.88  | 1.45 | 36.83 | 0.96 | 24.4 |
| TME - 12 - 8N               | 3/4            | 19.05 | 1/2      | 0.47 | 15.74 | 1-1/16           | 27.0 | 1.17 | 29.71 | 1.57 | 39.88  | 1.45 | 36.83 | 0.96 | 24.5 |
| TME - 12 - 12N              | 3/4            | 19.05 | 3/4      | 0.62 | 15.74 | 1-1/16           | 27.0 | 1.17 | 29.71 | 1.57 | 39.88  | 1.45 | 36.83 | 0.96 | 24.5 |
| TME - 14 - 12N              | 7/8            | 22.22 | 3/4      | 0.62 | 15.74 | 1-3/16           | 34.9 | 1.36 | 34.54 | 1.76 | 44.70  | 1.64 | 41.66 | 1.02 | 25.9 |
| TME - 16 - 12N              | 1              | 25.40 | 3/4      | 0.62 | 15.74 | 1-3/8            | 34.9 | 1.45 | 36.83 | 1.93 | 49.02  | 1.64 | 41.66 | 1.23 | 31.2 |
| TME - 16 - 16N              | 1              | 25.4  | 1        | 0.88 | 22.35 | 1-3/8            | 34.9 | 1.45 | 36.83 | 1.93 | 49.02  | 1.83 | 46.48 | 1.23 | 31.2 |
| TME - 20 - 20N              | 1-1/4          | 31.75 | 1-1/4    | 1.09 | 27.7  | 1-11/16          | 42.9 | 1.75 | 44.45 | 2.62 | 66.5   | 1.88 | 47.75 | 1.62 | 41.2 |
| TME - 24 - 24N              | 1-1/2          | 38.1  | 1-1/2    | 1.34 | 34    | 2                | 50.8 | 2.0  | 50.8  | 3.07 | 78.0   | 2.38 | 60.45 | 1.97 | 50.0 |
| TME - 32 - 32N              | 2              | 50.8  | 2        | 1.81 | 45.97 | 2-3/4            | 69.9 | 2.75 | 69.85 | 4.22 | 107.19 | 2.78 | 70.61 | 2.66 | 67.6 |

"D" - Dimension is minimum opening - dimensions are for reference only, and are subject to change without notice.

# MALE 90° ELBOW

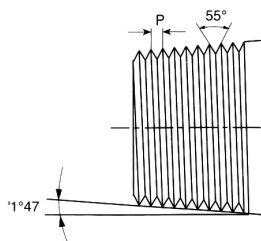
TME



| TUBE (METRIC) ISO TAPERED THREAD |           |       |      |        |      |      |      |      |      |
|----------------------------------|-----------|-------|------|--------|------|------|------|------|------|
| Part Number                      | A         | T     | D    | W      |      | N    | E    | N1   | I    |
|                                  | Tube O.D. | ISO   | mm   | in     | mm   | mm   | mm   | mm   | mm   |
| TME - 3M - 2P                    | 3         | R 1/8 | 2.4  | 7/16   | 11.1 | 17.0 | 23.6 | 17.8 | 12.9 |
| TME - 3M - 4P                    | 3         | R 1/4 | 2.4  | 1/2    | 12.7 | 18.0 | 24.6 | 23.4 | 12.9 |
| TME - 4M - 2P                    | 4         | R 1/8 | 2.4  | 1/2    | 12.7 | 18.8 | 25.4 | 18.8 | 13.7 |
| TME - 4M - 4P                    | 4         | R 1/4 | 2.4  | 1/2    | 12.7 | 18.8 | 25.4 | 23.4 | 13.7 |
| TME - 6M - 2P                    | 6         | R 1/8 | 4.8  | 1/2    | 12.7 | 19.6 | 27.0 | 18.8 | 15.3 |
| TME - 6M - 4P                    | 6         | R 1/4 | 4.8  | 1/2    | 12.7 | 19.6 | 27.0 | 23.4 | 15.3 |
| TME - 6M - 6P                    | 6         | R 3/8 | 4.8  | 11/16  | 17.5 | 22.4 | 29.8 | 26.2 | 15.3 |
| TME - 6M - 8P                    | 6         | R 1/2 | 4.8  | 13/16  | 20.6 | 24.4 | 31.8 | 33.0 | 15.3 |
| TME - 8M - 2P                    | 8         | R 1/8 | 4.8  | 9/16   | 14.3 | 21.3 | 28.8 | 19.8 | 16.2 |
| TME - 8M - 4P                    | 8         | R 1/4 | 6.4  | 9/16   | 14.3 | 21.3 | 28.8 | 24.4 | 16.2 |
| TME - 8M - 6P                    | 8         | R 3/8 | 6.4  | 11/16  | 17.5 | 23.1 | 30.6 | 26.2 | 16.2 |
| TME - 8M - 8P                    | 8         | R 1/2 | 6.4  | 13/16  | 20.6 | 25.1 | 32.6 | 33.0 | 16.2 |
| TME - 10M - 2P                   | 10        | R 1/8 | 4.8  | 11/16  | 17.5 | 23.9 | 31.5 | 21.6 | 17.2 |
| TME - 10M - 4P                   | 10        | R 1/4 | 7.1  | 11/16  | 17.5 | 23.9 | 31.5 | 26.2 | 17.2 |
| TME - 10M - 6P                   | 10        | R 3/8 | 7.9  | 11/16  | 17.5 | 23.9 | 31.5 | 26.2 | 17.2 |
| TME - 10M - 8P                   | 10        | R 1/2 | 7.9  | 13/16  | 20.6 | 25.9 | 33.5 | 33.0 | 17.2 |
| TME - 12M - 2P                   | 12        | R 1/8 | 4.8  | 13/16  | 20.6 | 25.9 | 36.0 | 23.6 | 22.8 |
| TME - 12M - 4P                   | 12        | R 1/4 | 7.1  | 13/16  | 20.6 | 25.9 | 36.0 | 28.2 | 22.8 |
| TME - 12M - 6P                   | 12        | R 3/8 | 9.5  | 13/16  | 20.6 | 25.9 | 36.0 | 28.2 | 22.8 |
| TME - 12M - 8P                   | 12        | R 1/2 | 9.5  | 13/16  | 20.6 | 25.9 | 36.0 | 33.0 | 22.8 |
| TME - 12M - 12P                  | 12        | R 3/4 | 9.5  | 1-1/16 | 27.0 | 29.7 | 39.8 | 36.8 | 22.8 |
| TME - 16M - 6P                   | 16        | R 3/8 | 9.5  | 15/16  | 23.8 | 27.9 | 38.0 | 30.2 | 24.4 |
| TME - 16M - 8P                   | 16        | R 1/2 | 11.9 | 15/16  | 23.8 | 27.9 | 38.0 | 35.1 | 24.4 |
| TME - 18M - 8P                   | 18        | R 1/2 | 11.9 | 1-1/16 | 27.0 | 29.7 | 39.8 | 36.8 | 24.4 |
| TME - 18M - 12P                  | 18        | R 3/4 | 15.1 | 1-1/16 | 27.0 | 29.7 | 39.8 | 36.8 | 24.4 |
| TME - 20M - 8P                   | 20        | R 1/2 | 11.9 | 1-3/8  | 34.9 | 34.5 | 44.6 | 41.7 | 26.0 |
| TME - 20M - 12P                  | 20        | R 3/4 | 15.9 | 1-3/8  | 34.9 | 34.5 | 44.6 | 41.7 | 26.0 |
| TME - 22M - 12P                  | 22        | R 3/4 | 15.9 | 1-3/8  | 34.9 | 34.5 | 44.6 | 41.7 | 26.0 |
| TME - 22M - 16P                  | 22        | R 1   | 18.3 | 1-3/8  | 34.9 | 34.5 | 44.6 | 46.5 | 26.0 |
| TME - 25M - 12P                  | 25        | R 3/4 | 15.9 | 1-3/8  | 34.9 | 36.8 | 49.1 | 41.7 | 31.3 |
| TME - 25M - 16P                  | 25        | R 1   | 21.8 | 1-3/8  | 34.9 | 36.8 | 49.1 | 46.5 | 31.3 |

Reference Specifications :

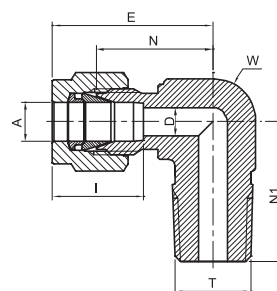
- DIN - ISO 2999 •55° Thread angle
- BS - 21 •Truncation of root and crest are round
- JIS - B0203 •Taper angle 1° 47'



"D" - Dimension is minimum opening - dimensions are for reference only, and are subject to change without notice.

# MALE 90° ELBOW

TME



| TUBE (INCH) ISO TAPERED THREAD |                |       |          |      |       |                  |      |      |       |      |        |      |       |      |      |
|--------------------------------|----------------|-------|----------|------|-------|------------------|------|------|-------|------|--------|------|-------|------|------|
| Part Number                    | A<br>Tube O.D. |       | T<br>ISO | D    |       | W<br>Wrench flat |      | N    |       | E    |        | N1   |       | I    |      |
|                                | in             | mm    |          | in   | mm    | in               | mm   | in   | mm    | in   | mm     | in   | mm    | in   | mm   |
| TME - 1 - 1P                   | 1/16           | 1.58  | R 1/16   | 0.05 | 1.27  | 7/16             | 11.1 | 0.60 | 15.24 | 0.75 | 19.05  | 0.70 | 17.78 | 0.34 | 8.6  |
| TME - 1 - 2P                   | 1/16           | 1.58  | R 1/8    | 0.05 | 1.27  | 7/16             | 11.1 | 0.60 | 15.24 | 0.75 | 19.05  | 0.70 | 17.78 | 0.34 | 8.6  |
| TME - 2 - 2P                   | 1/8            | 3.17  | R 1/8    | 0.09 | 2.28  | 7/16             | 11.1 | 0.67 | 17.02 | 0.93 | 23.62  | 0.70 | 17.28 | 0.50 | 12.7 |
| TME - 2 - 4P                   | 1/8            | 3.17  | R 1/4    | 0.09 | 2.28  | 1/2              | 12.7 | 0.71 | 18.03 | 0.97 | 24.64  | 0.92 | 23.37 | 0.50 | 12.7 |
| TME - 3 - 2P                   | 3/16           | 4.76  | R 1/8    | 0.12 | 3.04  | 1/2              | 12.7 | 0.74 | 18.80 | 1.00 | 25.40  | 0.74 | 18.80 | 0.54 | 13.7 |
| TME - 3 - 4P                   | 3/16           | 4.76  | R 1/4    | 0.12 | 3.04  | 1/2              | 12.7 | 0.74 | 18.80 | 1.00 | 25.40  | 0.92 | 23.37 | 0.54 | 13.7 |
| TME - 4 - 1P                   | 1/4            | 6.35  | R 1/16   | 0.12 | 3.04  | 1/2              | 12.7 | 0.77 | 19.55 | 1.06 | 26.9   | 0.74 | 18.79 | 0.60 | 15.3 |
| TME - 4 - 2P                   | 1/4            | 6.35  | R 1/8    | 0.19 | 4.82  | 1/2              | 12.7 | 0.77 | 19.56 | 1.06 | 26.92  | 0.74 | 18.80 | 0.60 | 15.3 |
| TME - 4 - 4P                   | 1/4            | 6.35  | R 1/4    | 0.19 | 4.82  | 1/2              | 12.7 | 0.77 | 19.56 | 1.06 | 26.92  | 0.92 | 23.37 | 0.60 | 15.3 |
| TME - 4 - 6P                   | 1/4            | 6.35  | R 3/8    | 0.19 | 4.82  | 11/16            | 17.5 | 0.88 | 22.35 | 1.17 | 29.71  | 1.03 | 26.16 | 0.60 | 15.3 |
| TME - 4 - 8P                   | 1/4            | 6.35  | R 1/2    | 0.19 | 4.82  | 13/16            | 20.6 | 0.96 | 24.38 | 1.25 | 31.75  | 1.30 | 33.02 | 0.60 | 15.3 |
| TME - 5 - 2P                   | 5/16           | 7.93  | R 1/8    | 0.19 | 4.82  | 9/16             | 14.3 | 0.84 | 21.34 | 1.13 | 28.70  | 0.78 | 19.81 | 0.64 | 16.2 |
| TME - 5 - 4P                   | 5/16           | 7.93  | R 1/4    | 0.25 | 6.35  | 9/16             | 14.3 | 0.84 | 21.34 | 1.13 | 28.70  | 0.96 | 24.38 | 0.64 | 16.2 |
| TME - 5 - 6P                   | 5/16           | 7.93  | R 3/8    | 0.25 | 6.35  | 11/16            | 17.5 | 0.91 | 23.11 | 1.20 | 30.48  | 1.03 | 26.16 | 0.64 | 16.2 |
| TME - 6 - 2P                   | 3/8            | 9.52  | R 1/8    | 0.19 | 4.82  | 5/8              | 15.9 | 0.91 | 23.11 | 1.20 | 30.48  | 0.82 | 20.83 | 0.66 | 16.9 |
| TME - 6 - 4P                   | 3/8            | 9.52  | R 1/4    | 0.28 | 7.11  | 5/8              | 15.9 | 0.91 | 23.11 | 1.20 | 30.48  | 1.00 | 25.40 | 0.66 | 16.9 |
| TME - 6 - 6P                   | 3/8            | 9.52  | R 3/8    | 0.28 | 7.11  | 11/16            | 17.5 | 0.94 | 23.87 | 1.23 | 31.24  | 1.03 | 26.16 | 0.66 | 16.9 |
| TME - 6 - 8P                   | 3/8            | 9.52  | R 1/2    | 0.28 | 7.11  | 13/16            | 20.6 | 1.02 | 25.90 | 1.31 | 33.28  | 1.30 | 33.02 | 0.66 | 16.9 |
| TME - 6 - 12P                  | 3/8            | 9.52  | R 3/4    | 0.28 | 7.11  | 1-1/16           | 27.0 | 1.17 | 29.71 | 1.46 | 37.08  | 1.45 | 36.83 | 0.66 | 16.9 |
| TME - 8 - 4P                   | 1/2            | 12.70 | R 1/4    | 0.28 | 7.11  | 13/16            | 20.6 | 1.02 | 25.90 | 1.42 | 36.07  | 1.11 | 28.19 | 0.90 | 22.9 |
| TME - 8 - 6P                   | 1/2            | 12.70 | R 3/8    | 0.38 | 9.65  | 13/16            | 20.6 | 1.02 | 25.90 | 1.42 | 36.07  | 1.11 | 28.19 | 0.90 | 22.9 |
| TME - 8 - 8P                   | 1/2            | 12.70 | R 1/2    | 0.41 | 10.41 | 13/16            | 20.6 | 1.02 | 25.90 | 1.42 | 36.07  | 1.30 | 33.02 | 0.90 | 22.9 |
| TME - 8 - 12P                  | 1/2            | 12.70 | R 3/4    | 0.41 | 10.41 | 1-11/16          | 27.0 | 1.17 | 29.71 | 1.57 | 39.88  | 1.45 | 36.83 | 0.90 | 22.9 |
| TME - 10 - 6P                  | 5/8            | 15.87 | R 3/8    | 0.38 | 9.61  | 15/16            | 23.8 | 1.10 | 27.94 | 1.50 | 38.10  | 1.19 | 30.23 | 0.96 | 24.4 |
| TME - 10 - 8P                  | 5/8            | 15.87 | R 1/2    | 0.47 | 11.94 | 15/16            | 23.8 | 1.10 | 27.94 | 1.50 | 38.10  | 1.38 | 35.05 | 0.96 | 24.4 |
| TME - 10 - 12P                 | 5/8            | 15.87 | R 3/4    | 0.50 | 12.70 | 1-1/16           | 27.0 | 1.17 | 29.71 | 1.57 | 39.88  | 1.45 | 36.83 | 0.96 | 24.4 |
| TME - 12 - 8P                  | 3/4            | 19.05 | R 1/2    | 0.47 | 15.74 | 1-1/16           | 27.0 | 1.17 | 29.71 | 1.57 | 39.88  | 1.45 | 36.83 | 0.96 | 24.5 |
| TME - 12 - 12P                 | 3/4            | 19.05 | R 3/4    | 0.62 | 15.74 | 1-1/16           | 27.0 | 1.17 | 29.71 | 1.57 | 39.88  | 1.45 | 36.83 | 0.96 | 24.5 |
| TME - 14 - 12P                 | 7/8            | 22.22 | R 3/4    | 0.62 | 15.74 | 1-3/16           | 34.9 | 1.36 | 34.54 | 1.76 | 44.70  | 1.64 | 41.66 | 1.02 | 25.9 |
| TME - 16 - 12P                 | 1              | 25.40 | R 3/4    | 0.62 | 15.74 | 1-3/8            | 34.9 | 1.45 | 36.83 | 1.93 | 49.02  | 1.64 | 41.66 | 1.23 | 31.2 |
| TME - 16 - 16P                 | 1              | 25.4  | R 1      | 0.88 | 22.35 | 1-3/8            | 34.9 | 1.45 | 36.83 | 1.93 | 49.02  | 1.83 | 46.48 | 1.23 | 31.2 |
| TME - 20 - 20P                 | 1-1/4          | 31.75 | R 1-1/4  | 1.09 | 27.7  | 1-11/16          | 42.9 | 1.75 | 44.45 | 2.62 | 66.5   | 1.88 | 47.75 | 1.62 | 41.2 |
| TME - 24 - 24P                 | 1-1/2          | 38.1  | R 1-1/2  | 1.34 | 34.0  | 2                | 50.8 | 2.0  | 50.8  | 3.07 | 78.0   | 2.38 | 60.45 | 1.97 | 50.0 |
| TME - 32 - 32P                 | 2              | 50.8  | R 2      | 1.81 | 45.97 | 2-3/4            | 69.9 | 2.75 | 69.85 | 4.22 | 107.19 | 2.78 | 70.61 | 2.66 | 67.6 |

"D" - Dimension is minimum opening - dimensions are for reference only, and are subject to change without notice.